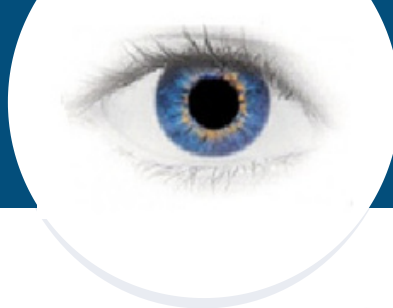


"RECOGNITION IN THE
BLINK OF AN EYE"



Innovative Corrections Management Developed By Sheriffs For Sheriffs

Effective corrections management begins with access to detailed information about every inmate in your custody. The Inmate Management and Tracking System (IMATS™) gives you Total Inmate Control™ by capturing detailed information on every inmate in your facility, and providing real-time accurate information.

IMATS™ is a total corrections solution that is inexpensive, simple to install, and easy to learn and use. Most importantly, IMATS™ fits seamlessly into existing facility operations, allowing staff to manage operations more efficiently.



UTILIZING PROVEN TECHNOLOGY

IMATS™ is based on proven and widely used technologies from National Sheriffs' Associations' Strategic Partner, BI2 Technologies. Sheriffs across the nation have relied on BI2's proven, cost-effective, and innovative Inmate Recognition and Identification System (I.R.I.S.™) to help them better protect the citizens of their counties, their staffs, and those in their custody.

IMATS™ PROVIDES EASY ACCESS TO VITAL OFFENDER INFORMATION

The IMATS™ system matches how facilities operate, delivering control through ten software modules that work together to help staff better manage correctional facilities.

- **Intake & Booking** captures all of the information needed to quickly book an individual, when they enter the facility. It can also add new information as needed.
- **Property** enables staff to quickly seize, store, track, locate and dispose of property, including cash. It also creates all needed tags and receipts.
- **Housing** easily assigns, tracks, and manages inmate bed locations. It includes management tools for conducting capacity analysis based on bed/cell availability.
- **Classification** provides the ability to quickly analyze, track and management status, behavior and treatment needs. Its flexible table-driven design is based on the facility's policies.
- **Reports** has a comprehensive collection of standard reports. It also has a report building tool, which creates customized reports that find, analyze and present information, as needed.
- **Case Management** tracks, measures and manages every aspect of an inmate's supervision, from date calculation to program participation. The module is date and event driven.
- **Security** is integrated with all of the other functions within IMATS™. From counts to incident reporting, the Security module gives you Total Inmate Control™.
- **Scheduling & Movement** plans, schedules, coordinates, tracks and manages all internal and external events, activities and appointments for every inmate.
- **Visits** captures, stores, monitors, schedules, and most importantly, controls all visits in accordance with facility policies and procedures.
- **Administration** controls and customizes how IMATS™ operates. Data tables can be customized that describe every component of the operation, from offense codes to good time credits.



800-479-1621



info@bi2technologies.com



488 State Road
Plymouth, MA 02360

